

PALMGREN®

**EMBRACE
THE WORK®**



**CUTTING-EDGE
PALMGREN
SALES EVENT**

HEAVY-DUTY BENCH GRINDERS - POWERGRIND™ SERIES

- Heavy duty capacitor motors that supply the extra current required during the start-up and operation under load
- Large adjustable tool rests for safe, efficient tilt and angle grinding
- Exclusive single port dust collection system, on selected models
- CSA approved OSHA compliant



9682075

Item #	Description	List Price	SALE
9682061	6" 1/3HP 115/230V grinder, no dust collection	\$191.00	\$181.00
9682062	6" 1/3HP 115/230V grinder w/dust collection	\$233.00	\$221.00
9682081	8" 3/4HP 115/230V grinder w/dust collection	\$363.00	\$345.00
9682072	6" 1/2HP 115/230V grinder w/dust collection	\$422.00	\$401.00
9682073	8" 1 HP 115/230V grinder w/dust collection	\$643.00	\$611.00
9682075	10" 1.5HP 115/230V grinder w/dust collection	\$1,102.00	\$1,047.00

VARIABLE SPEED HEAVY-DUTY BENCH GRINDERS - POWERGRIND™ SERIES

- Heavy duty capacitor motors that supply the extra current required during the start-up and operation under load
- Large adjustable tool rests for safe, efficient tilt and angle grinding
- Exclusive single port dust collection system, on selected models
- CSA approved OSHA compliant



9682098

Item #	Description	List Price	SALE
9682096	6" 1/2HP 115/240V Variable Speed Bench Grinder	\$718.00	\$600.00
9682097	8" 1HP 115/240V Variable Speed Bench Grinder	\$874.00	\$700.00
9682098	10" 1.5HP 115/240V Variable Speed Bench Grinder	\$1,388.00	\$1,100.00

BUFFERS

- Equipped with the latest technology variable speed inverter delivering a broad range of continuous speeds to fit any application
- Powerful, heavy-duty capacitor motors provide additional torque and provide plenty of power at all speeds without any loss of rpm's at full load
- Variable speed buffers have LED speed readout with "soft" touch on/off and variable speed control pad



9682106

Item #	Description	List Price	SALE
9682106	6" 3/4HP 115/240V Variable Speed Bench Buffer	\$524.00	\$498.00
9682107	8" 1HP 115/240V Variable Speed Bench Buffer	\$580.00	\$551.00
9682108	10" 1.5HP 115/240V Variable Speed Bench Buffer	\$1,027.00	\$976.00
9682105	12" Dual Speed Buffer With Stand And Guards	\$1,875.00	\$1,781.00
9682099	Single Guard for 6" & 8" Buffers	\$59.00	\$56.00
9682100	Single Guard for 10" Buffers	\$97.00	\$92.00

2" X 42" COMBINATION BELT & 6" DISC FINISHING MACHINE

- 2 x 42" belt with a 6" disc bench model
- Belt operates in the horizontal or vertical position and is designed for fast, easy belt changes
- Both the belt and disc come with a tilting work table. Disc table is slotted to accept the standard miter gauge
- 1/3HP - 120V



Item #	List Price	SALE
9681061	\$304.00	\$250.00



6" X 48" COMBINATION BELT & 9" DISC FINISHING MACHINE

- Belt operates in the horizontal or vertical position and is designed for fast, easy belt changes
- Both the belt and disc come with a tilting work table that is slotted to accept the standard miter gauge
- The base is cast iron for maximum rigidity

Item #	List Price	SALE
9681093	\$900.00	\$855.00

6" X 48" COMBINATION BELT & 10" DISC FINISHING MACHINE

- Powerful direct drive power train
- Adjustable guarding for both the belt and disc sections
- 1HP - 115/230V - 1PH

BELT SECTION

- Belt arm adjusts vertically, horizontally and any position in-between
- Upper idler drum supported on both sides with bearings

DISC SECTION

- Fully machined and balanced steel disc
- Disc mounted directly to the motor shaft

Item #	List Price	SALE
9681109	\$1,711.00	\$1,625.00



6" X 48" COMBINATION BELT & 12" DISC FINISHING MACHINE

- Powerful direct drive power train
- Adjustable guarding for both the belt and disc sections
- 1HP - 115/230V - 1PH

BELT SECTION

- Belt arm adjusts vertically, horizontally and any position in-between
- Upper idler drum supported on both sides with bearings

DISC SECTION

- Fully machined and balanced steel disc
- Disc mounted directly to the motor shaft



Item #	List Price	SALE
9681122	\$2,299.00	\$2,184.00



VARIABLE SPEED 6" X 48" COMBINATION BELT & 14" DISC FINISHING MACHINE

- Powerful direct drive power train
- Adjustable guarding for both the belt and disc sections
- Single dust collection port for both sections for easy connection and cleaning

Item #	List Price	SALE
9681108	\$2,421.00	\$2,300.00

2" X 72" BELT/12" DISC VARIABLE SPEED BELT GRINDER

- Full guarding with spark shields for OSHA safety compliance
- Easily removable platen provides quick change overs to slack back grinding
- Simple easy belt tensioning and tracking

Item #	List Price	SALE
9681104	\$2,136.00	\$1,922.00



2" X 72" DUAL STATION VARIABLE SPEED BELT GRINDER

- Full 1.5 horsepower variable speed motor
- Full guarding for OSHA safety compliance
- Spark shields

Item #	List Price	SALE
9681107	\$2,522.00	\$2,270.00

2" X 72" BELT GRINDER WITH 10" BUFFER

- Heavy-duty cast-iron construction
- Full 1.5 horsepower, variable speed motor
- Quick, easy belt changes with single handle quick release system

Item #	List Price	SALE
9681106	\$1,772.00	\$1,595.00



12" VARIABLE SPEED DISC SANDER

- Direct drive powertrain
- Balanced disc
- 45° large cast iron tilting table with miter gauge
- Adjustable guarding
- Dust collection port



Item #	List Price	SALE
9681319	\$1,524.00	\$1,448.00



9681318



9681312

12" DISC ABRASIVE FINISHING MACHINE

- Direct drive
- 45° tilting table
- Miter gauge

Item #	List Price	SALE
9681312	\$378.00	\$359.00
9681318	\$557.00	\$529.15

BELT GRINDERS

- Belt is adjustable for use in either the vertical or horizontal position or any position in-between
- Front mounted on/off paddle switch
- Simple belt tensioning and adjustment
- Full belt guard

9682402



Item #	Description	List Price	SALE
9682401	Belt Grinder 1in.	\$405.00	\$385.00
9682402	Belt Grinder 2in.	\$514.00	\$488.00
9682404	Belt Grinder 4in.	\$701.00	\$666.00

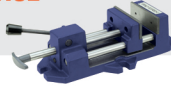
HEAVY DUTY 16-SPEED FLOOR STEP PULLEY DRILL PRESSES

- Maximum spindle run out of 0.0005"
- Rack and pinion table raiser
- Heavy cast metal 3 spoke quill feed handle with ergonomic speed feed handle
- Front mounted industrial paddle-type power switch



QUICK ACTION VISE

Item #9612421
VALUED AT \$252.00



Item #	Description	List Price	SALE
9680158	15" 115/230V - 1 PH	\$1,296.00	\$1,231.00
9680177	17" 115/230V - 1 PH	\$1,541.00	\$1,464.00
9680209	20" 115/230V - 1 PH	\$2,251.00	\$2,138.00

9680177



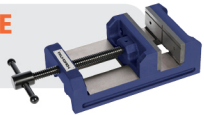
FLOOR STEP PULLEY DRILL PRESSES

- Quick change vertical depth stop for repetitive accurate operations
- Rack and pinion table height adjustment
- Front mounted locking rocker switch to prevent unauthorized use



DRILL PRESS VISE

Item #9612352
VALUED AT \$129.00



Item #	Description	List Price	SALE
9680201	15" Floor Step Pulley Drill Press	\$655.00	\$622.00
9680133	17" Floor Step Pulley Drill Press	\$802.00	\$762.00
9680220	20" Floor Step Pulley Drill Press	\$1,473.00	\$1,399.00

HEAVY DUTY GEAR HEAD DRILL PRESSES

- Fully enclosed machine tool spindle with internal 3 MT mounted in precision bearings
- Forward & reverse spindle switch
- Interlocking chuck guard



DRILL PRESS VISE

Item #9612602
VALUED AT \$621.00



Item #	Description	List Price	SALE
9680223	20" 230V - 3PH	\$5,360.00	\$5,092.00

20" VARIABLE SPEED BELT DRIVE DRILL PRESS

- Forward and reverse spindle switch
- Hand wheel speed control
- Digital speed readout



DRILL PRESS VISE

Item #9612602
VALUED AT \$621.00



Item #	Description	List Price	SALE
9680226	115/230V Single Phase	\$6,043.00	\$5,741.00
9680227	230/460V Three Phase	\$5,951.00	\$5,653.00



PRODUCTION TAP

- Parallel arm with 8" to 55" reach
- Stationary bench bracket
- Quick change tooling adaptor
- Air preparation unit with lubricator, filter, regulator and pressure gauge
- High torque reversible air motor

Item #	Description	List Price	Sale Price
9680410	Pneumatic Tapping Machine, 55" reach - 400 rpm	\$2,838.00	\$2,696.00
9680411	Pneumatic Tapping Machine, 55" reach - 700 rpm	\$2,838.00	\$2,696.00
9680412	Pneumatic Tapping Machine, 55" reach - 300 rpm	\$3,444.00	\$3,272.00



QUICK TAP

- Parallel arm reach 37" max. / 4" min.
- Stationary bench bracket
- Quick change tooling adaptor
- Air preparation unit with lubricator, filter, regulator and pressure gauge
- Vertical motor bracket
- High torque reversible air motor

Item #	Description	List Price	Sale Price
9680420	Pneumatic Tapping machine 37" reach - 400 rpm	\$2,694.00	\$2,559.00
9680421	Pneumatic Tapping machine 37" reach - 700 rpm	\$2,694.00	\$2,559.00

7" X 12" HORIZONTAL BAND SAW

- Step pulley drive train with 4 speed settings
- Adjustable hydraulic down feed of the saw head
- Flood coolant system
- Rapid acting vise
- Castors for easy positioning of the saw anywhere in the shop
- 1HP - 120/240V - 1 PH - 60Hz



Item #	List Price	SALE
9683311	\$2,536.00	\$1,900.00

FREE

2" X 6" BELT & DISC SANDER WITH 9683311 OR 9683308 PURCHASE. ITEM 9681061. VALUED AT \$304.00.



8" X 12" HORIZONTAL BAND SAW

- Hydraulic feed control for cutting stock at variable rates
- Adjustable blade guides deliver accurate cuts
- Chip blade brush
- Coolant system with adjustable coolant flow
- Castors that roll easy for positioning
- 1HP - 120/240V - 1 PH



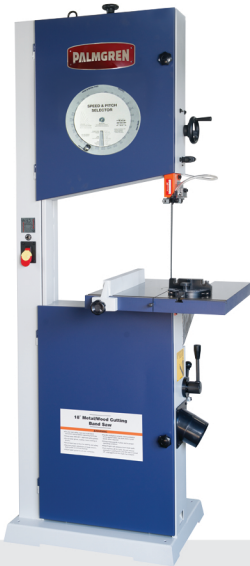
Item #	List Price	SALE
9683308	\$3,477.00	\$2,550.00



10" VERTICAL METAL CUTTING BAND SAW

- 3 speed belt driven system
- Machined cast iron table with miter gauge slot
- Balanced cast blade wheels
- Includes rip fence assembly and miter gauge
- 115 V - 1/3 HP

Item #	Description	List Price	SALE
9683128	10" Vertical Band Saw	\$725.00	\$689.00
9683129	Open stand for 9683128	\$76.00	\$72.00



15" VERTICAL WOOD/METAL BAND SAW

- Unitized welded steel frame construction
- Cast blade wheels
- Large ground cast iron work table that tilts up to 45°
- Adjustable precision bearing blade guides
- Hinged wheel covers and convenient blade tensioning wheel for easy accessibility and fast blade changing and adjustments
- 4" dust port
- 115 V - 1/3 HP - 1PH

Item #	Size	List Price	SALE
9683115	15"	\$2,994.00	\$2,844.00

9" X 20" BENCH LATHE

- Machine tool spindle
- Dual P5 taper roller bearings on spindle
- Prismatic bed of solid aged cast iron – hardened
- 3 Jaw lathe chuck
- 115 V - 1PH

Item #	List Price	SALE
9684504	\$3,528.00	\$3,352.00



COMBINATION BENCH LATHE

- Dual P5 taper roller bearings on spindle
- Prismatic bed of solid aged cast iron – hardened
- 3 Jaw lathe chuck
- Drill chuck and arbor

Item #	List Price	SALE
9680213	\$5,180.00	\$4,921.00



12" X 36" ENGINE LATHE

- Splash Guards, Chuck, and Tool Post Safety Guard
- 3 & 4 Jaw Chucks
- Inch & Metric Gears for Threading
- Steady and Follow Rest
- 115/230V - 1 PH

Item #	List Price	SALE
9684510	\$12,207.00	\$11,597.00



13" GEAR HEAD MILLING MACHINE VARIABLE SPEED

- Halogen work light
- Depth stop
- Interlocking spindle safety guard
- Draw bar

Item #	Description	List Price	SALE
9680159	5/8HP, 240V, 1PH	\$2,346.00	\$2,229.00



14 GEAR HEAD MILLING MACHINE VARIABLE SPEED

- Halogen work light
- Depth stop
- Digital speed read out
- Digital readout depth gauge
- Interlocking spindle safety guard
- Draw bar

Item #	Description	List Price	SALE
9680164	14" - 1.25HP, 120V, 1PH	\$3,295.00	\$3,130.00



HEAVY DUTY FLOOR STAND

- Shelf and chip tray
- Easy access foot for tool storage
- 19-3/4" L x 16-1/2" W x 35-1/2" H
- Fits item # 9680159 and #9680164 milling machines

Item #	List Price	SALE
9670107	\$708.00	\$673.00



10" TABLE SAW

- Sliding rip fence and table extension allow you to rip a 4' x 8' sheet of plywood in half.
- 6" wheels make the unit portable and the tubular stand makes the saw stable on the job site.
- Front and rear locking rip fence gives you smooth accurate cuts.
- 2HP - 120V - 15A



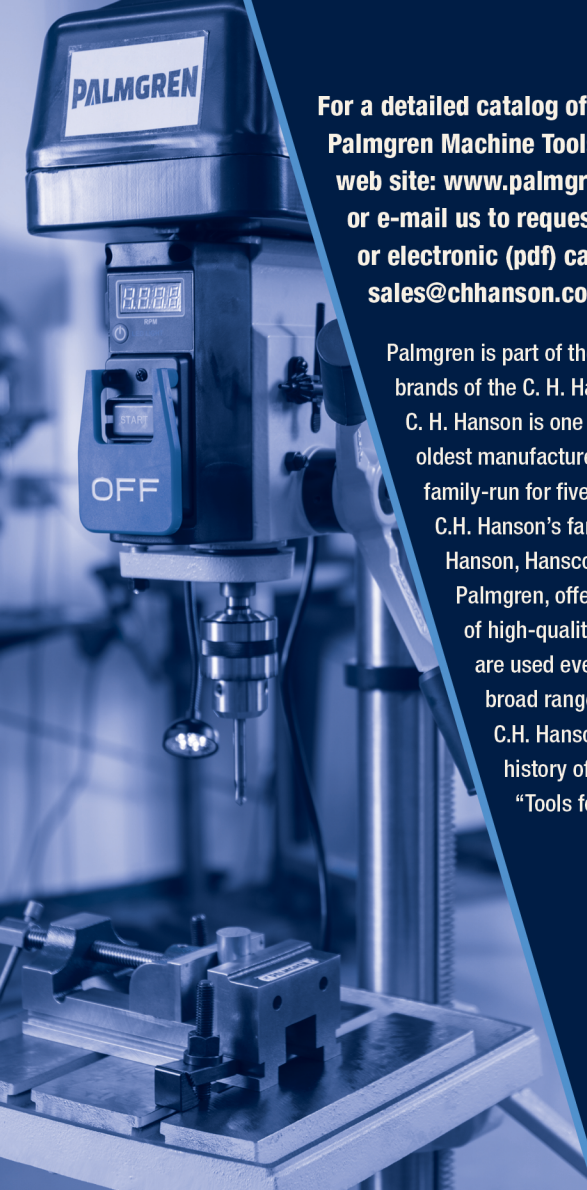
Item #	List Price	SALE
9683408	\$605.00	\$574.75



UNIVERSAL MULTI TOOL STAND

- All steel construction
- 10 Gauge tabletop with pre-cut mounting slots
- Table top is large enough to accommodate up to 2 tools
- Storage shelf
- Adjustable leveling pads

Item #	List Price	SALE
9670099	\$430.00	\$408.50



**For a detailed catalog of the full line
Palmgren Machine Tools visit our
web site: www.palmgren.com
or e-mail us to request a printed
or electronic (pdf) catalog at:
sales@chhanson.com**

Palmgren is part of the family of brands of the C. H. Hanson Company. C. H. Hanson is one the nation's oldest manufacturers and has been family-run for five generations. C.H. Hanson's family of brands, Hanson, Hansco-Mark, and Palmgren, offer a wide range of high-quality products that are used every day across a broad range of industries. C.H. Hanson has a rich history of truly building "Tools for Generations."

PALMGREN®

2000 N. Aurora Road
Naperville, IL 60563
p: 800-827-3398
f: 800-827-5834
sales@chhanson.com
palmgren.com
spring24machinery